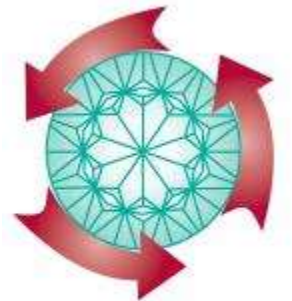


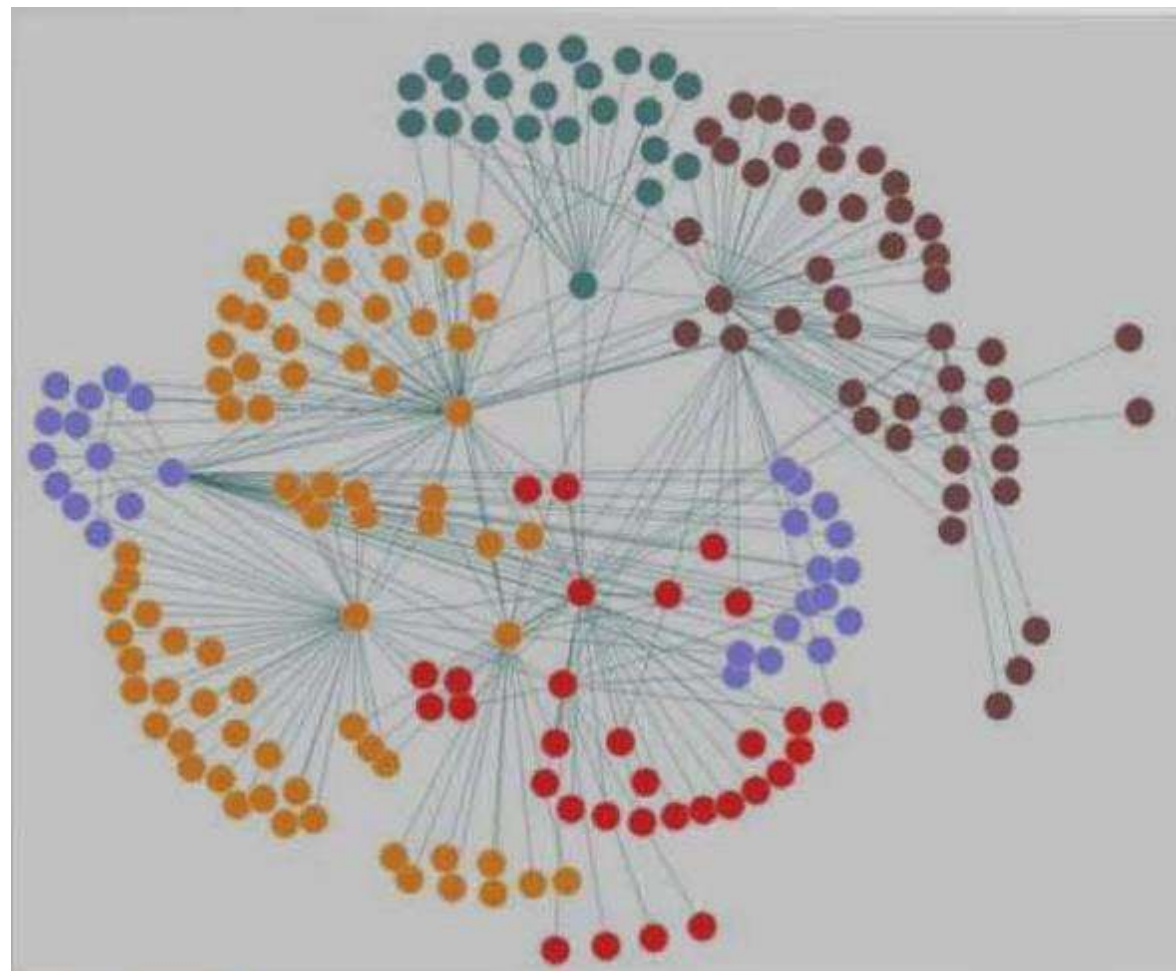
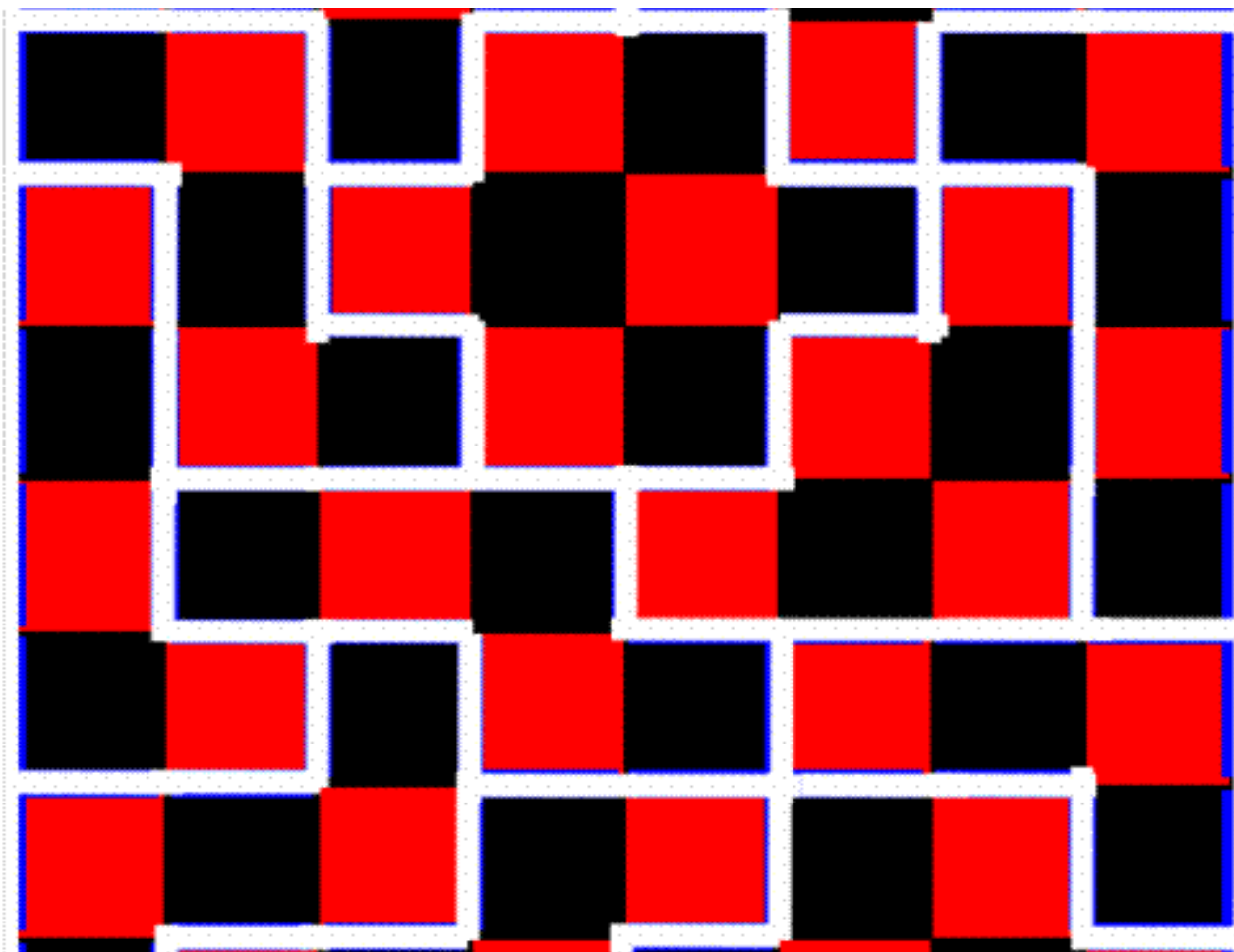
Learning Spaces Collaboratory Webinar

Spaces for Dissolving Boundaries between Communities

November 1, 2016



<http://www.pkallsc.org/>



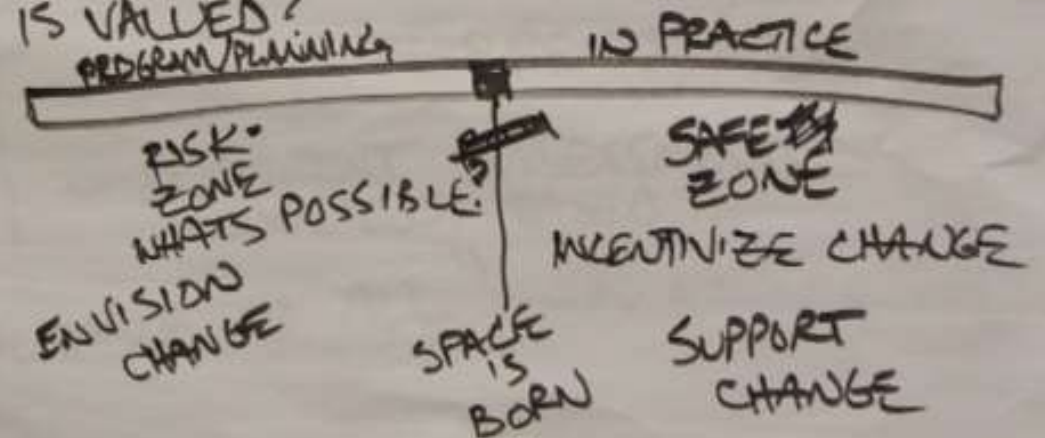
LSC Roundtables



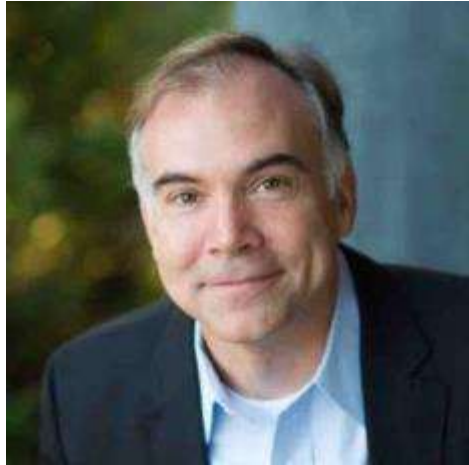
WHY IS TRIAL & ERROR
NOT VALUED IN
TEACHING & LEARNING?

WHAT'S CREATING/CONTRIBUTING
TO RISK AVERSION?
[SUPPORTED FACULTY w/ CURRICULA CHANGE
STANFORD] SUSPENDING STUDENT EVALS
FOR 1 YEAR DURING EXPERIMENT.

HOW TO COMMUNICATE THAT ~~THE~~ INNOVATION
IS VALUED?



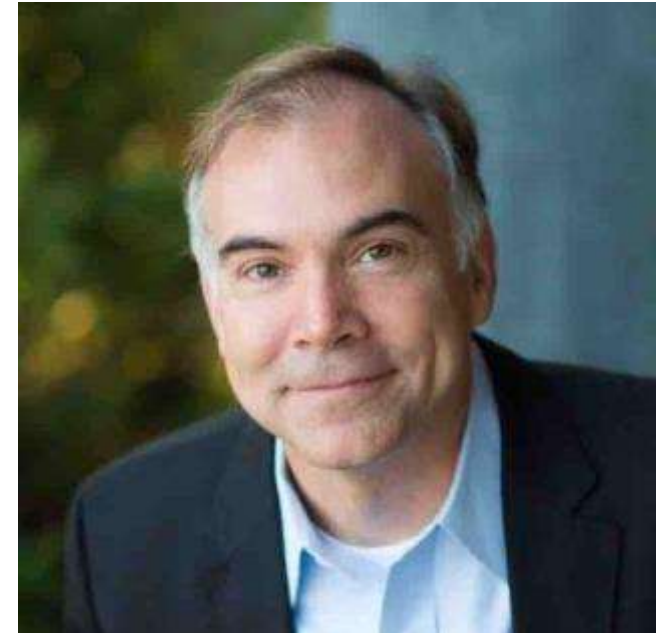
Facilitators: Academics and Architects



- Joe Atkins, Principal – VMDO
- Verna Case, Associate Dean of Faculty – Davidson College
- Debra March, Dean of Library Services – Young Harris College
- Jay Verspyck, Senior Designer – Shepley Bulfinch



- Jeanne L. Narum, Principal – Learning Spaces Collaboratory



Joe Atkins

AIA, LEED AP BD+C

Principal
VMDO Architects





Davidson College

Jay Verspyck
Shepley Bulfinch





Young Harris College
Debra Marsh
Dean of Library Services





Davidson College
Verna Case
Associate Dean of Faculty



Learning Goals

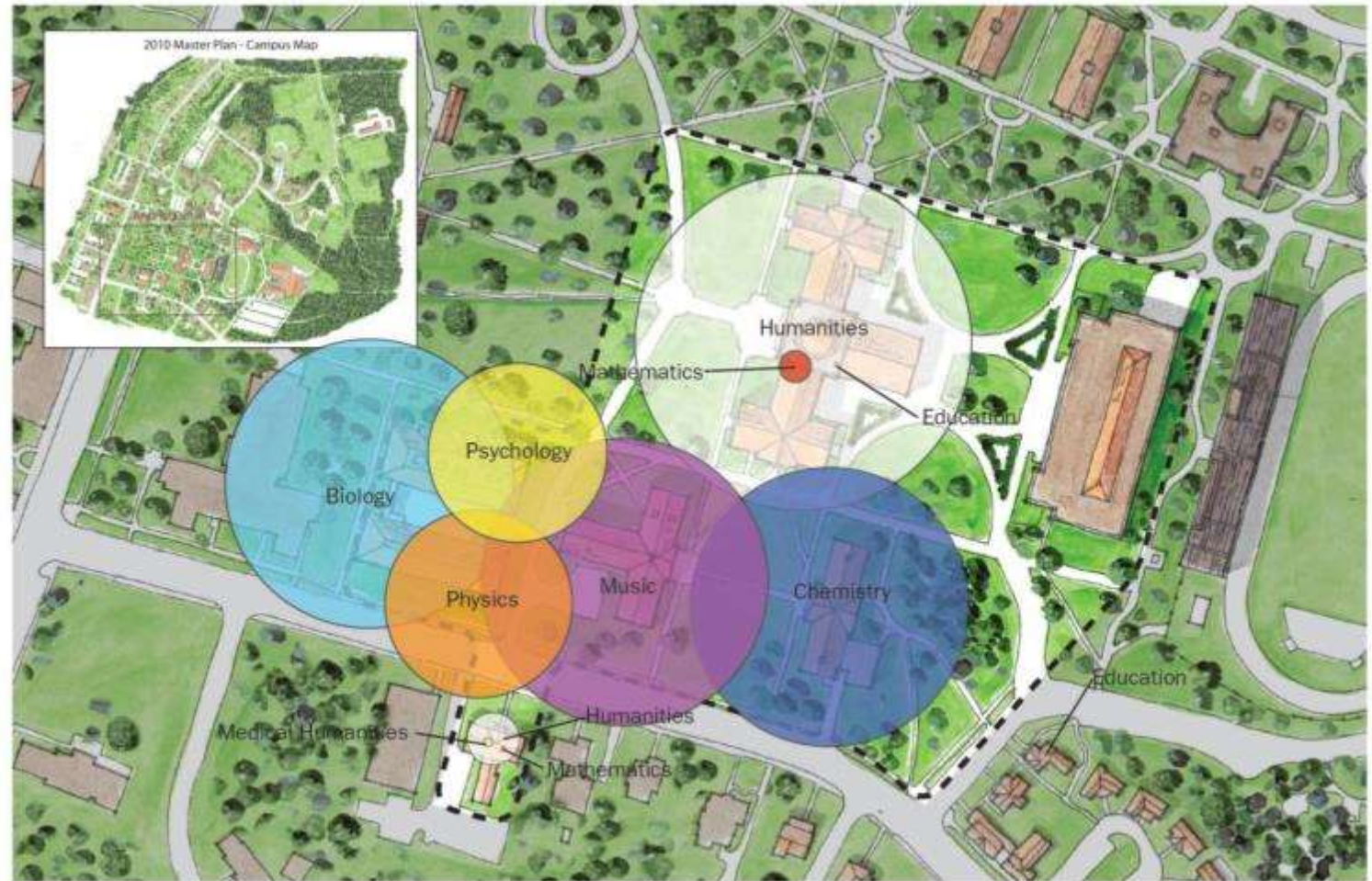
- How to engage discrete communities across the campus as co-creators of learning spaces that dissolve boundaries toward a shared awareness that individual buildings—as well as entire campuses—can be understood as an eco-system for learning
- How to unearth and address questions about why dissolving boundaries matter—from the perspective of students, of the institution
- How to keep inspired and energized about the potential of a project, during a planning process that is complex, that requires a common language, shared vision



Blurring Boundaries

E. Craig Wall, Jr.
Academic Center

Davidson College



- To break down departmental silos
- To find opportunities for collaboration
- To encourage human interactions

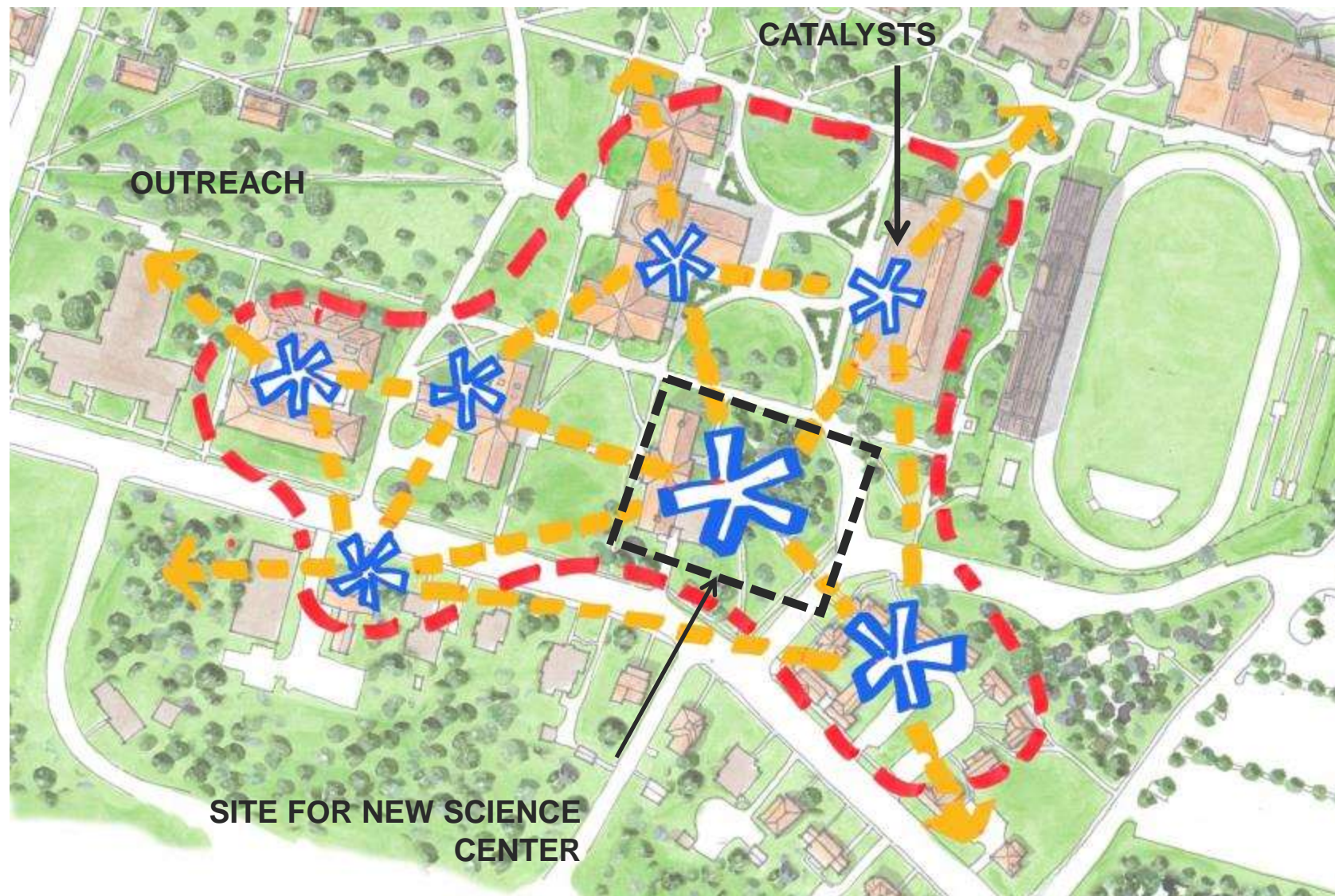
Blurring Boundaries

E. Craig Wall, Jr.
Academic Center

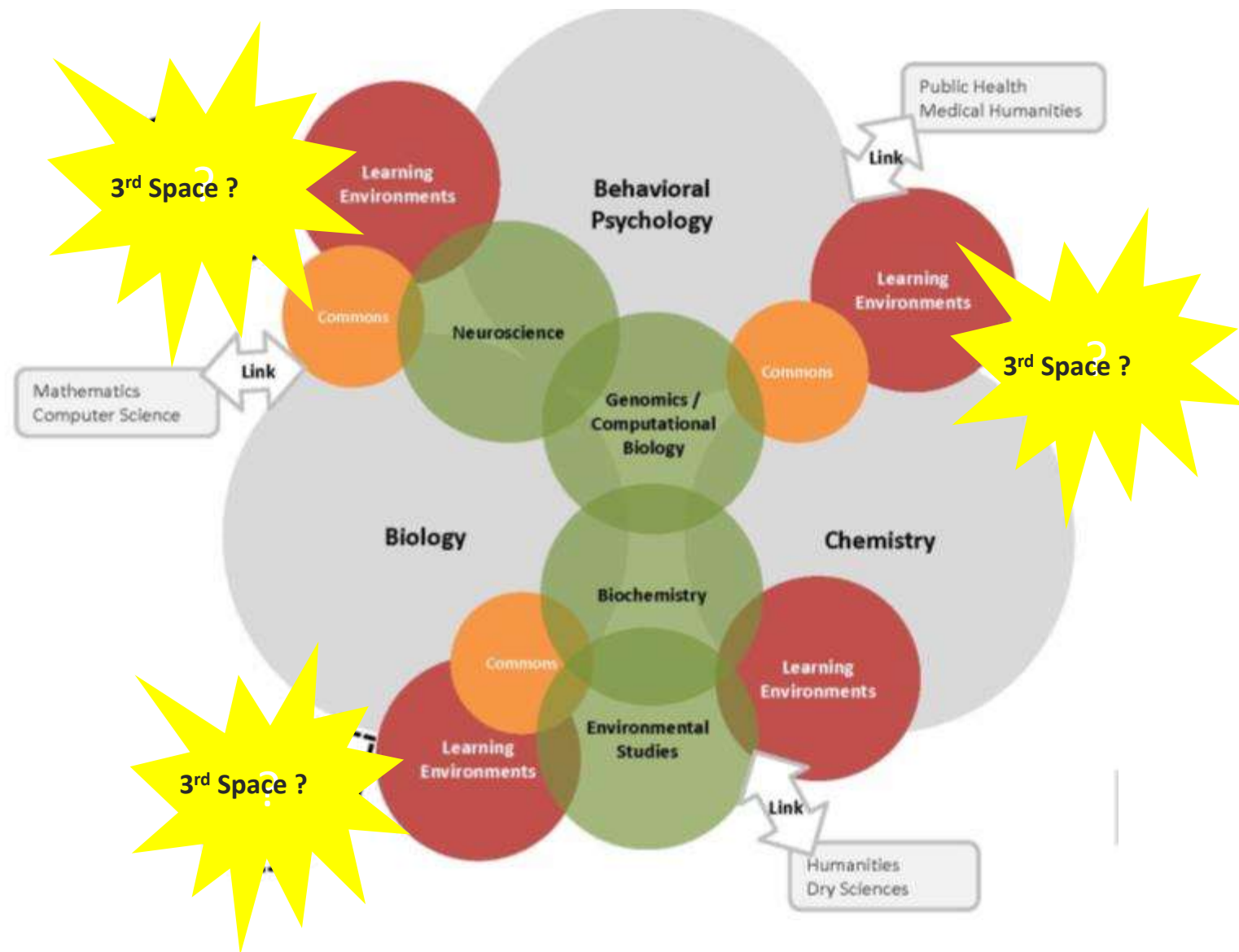
Davidson College

Agenda

- Institutional Vision
- Process for coalescing constituents
- Working as a team
- Pulling it all together
- Lessons Learned



The Academic Neighborhood



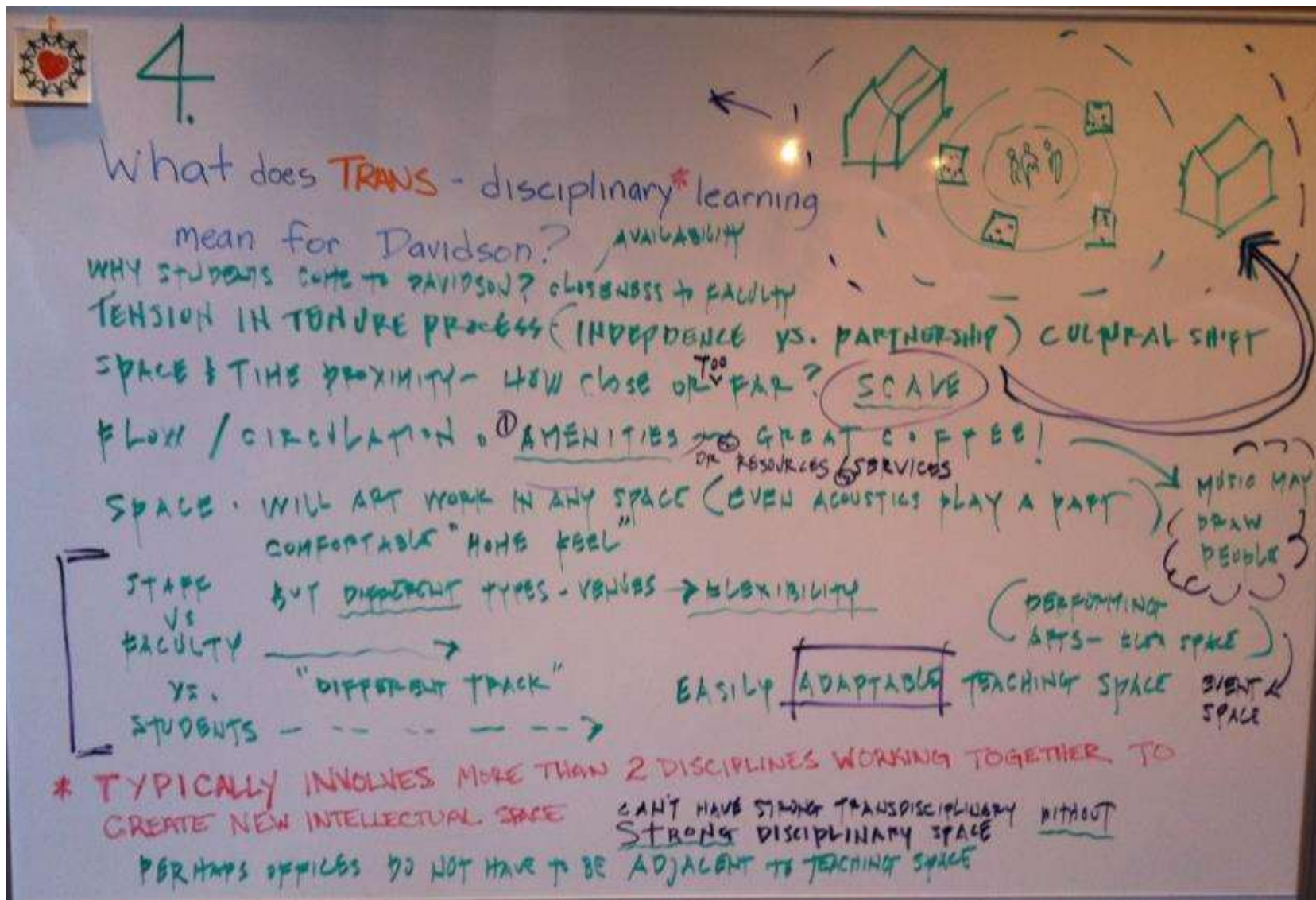
Blurring Boundaries Across Disciplines



Davidson College Work Session

- **Foster collaboration across and within disciplines**
- Grow transdisciplinary programs
- Build facilities that look towards the future
- Create a hub for collaboration
- Enhance connections to the natural world
- Serve as a campus gateway

Davidson College Guiding Principles



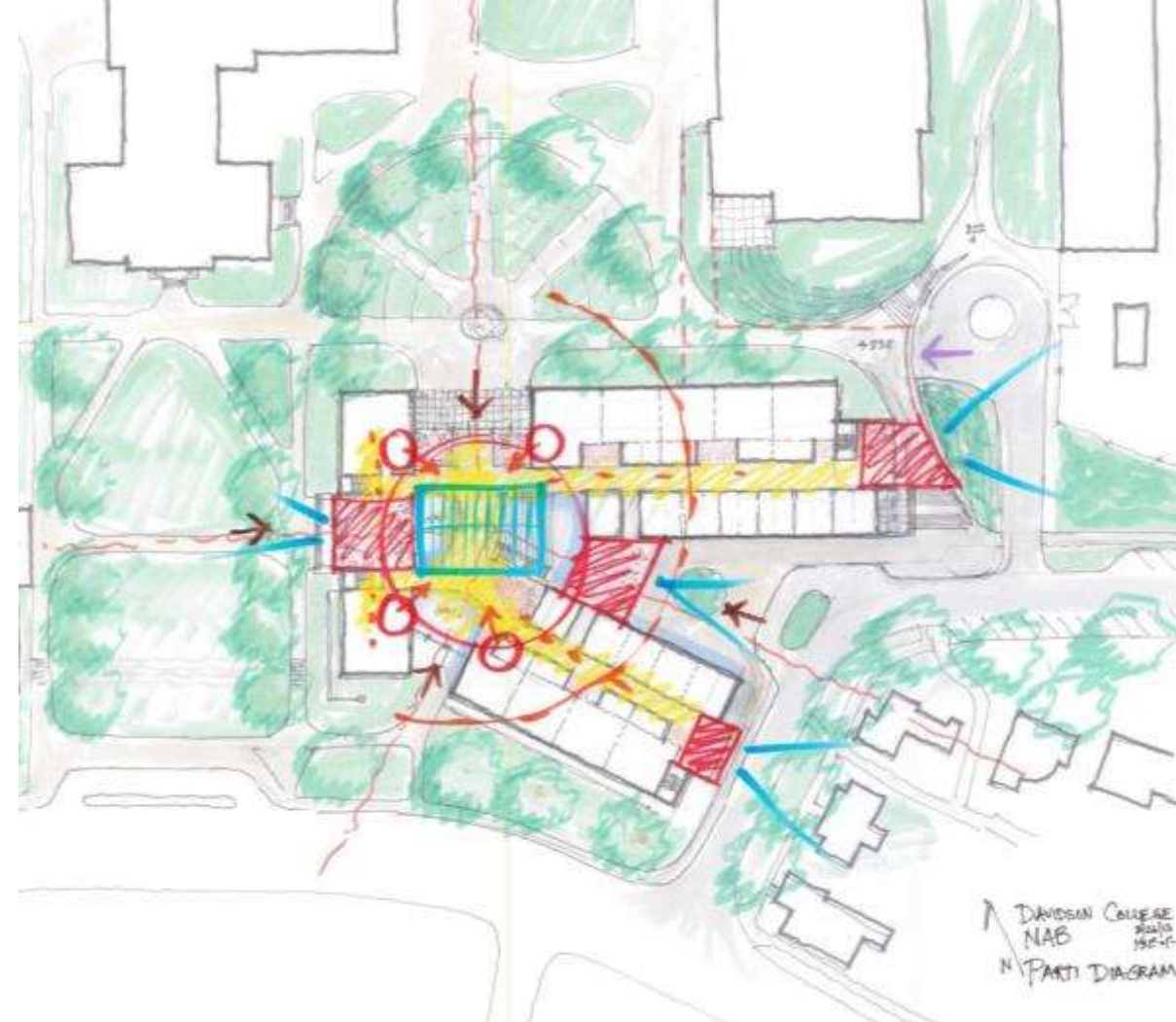
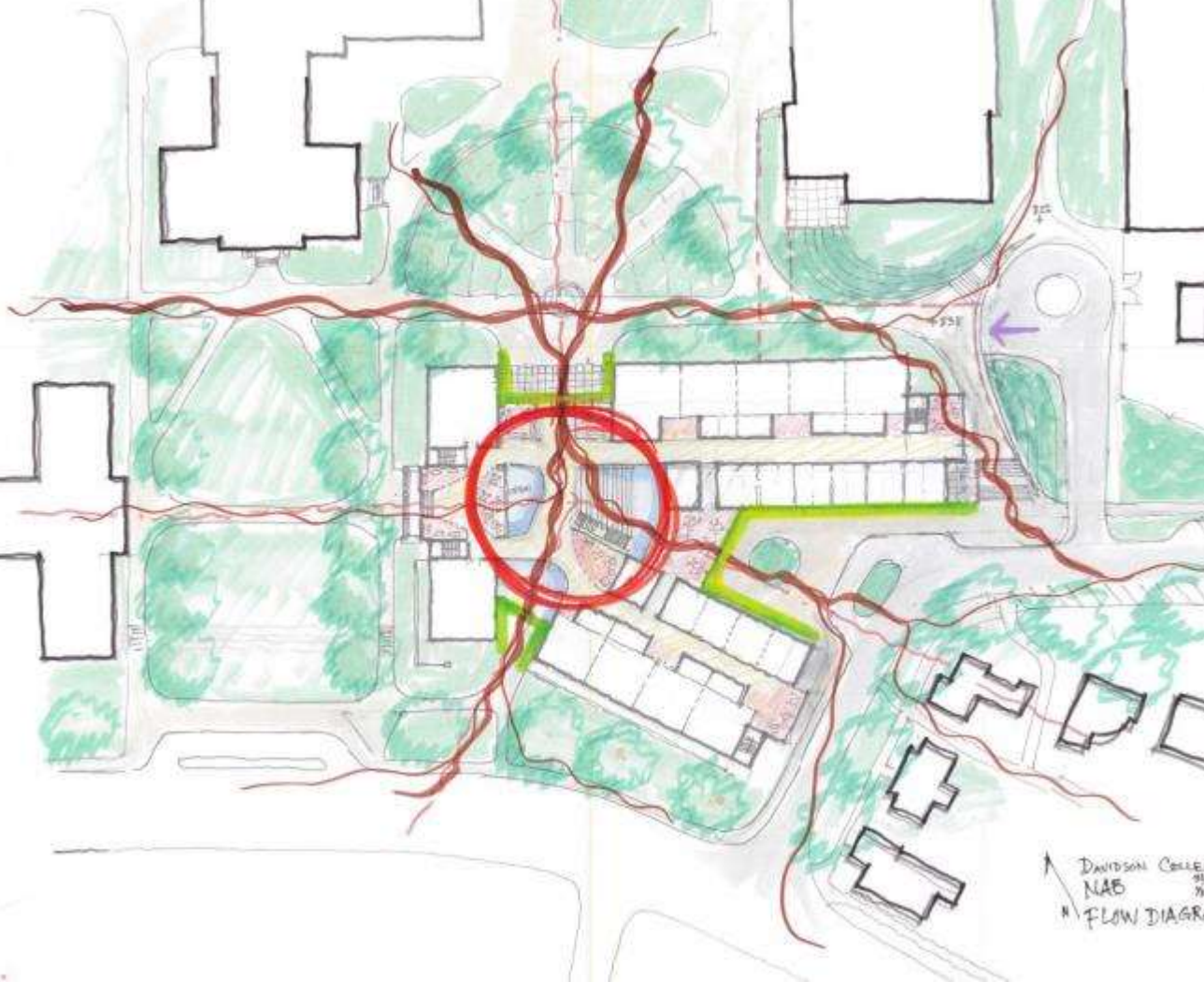
Guiding Questions

What does Transdisciplinary learning mean for Davidson? Blurring the boundaries



Working as a Team

Curriculum and Program



Blurring Boundaries Across Disciplines



Blurring Boundaries Across Disciplines



Forum Space



Forum Space



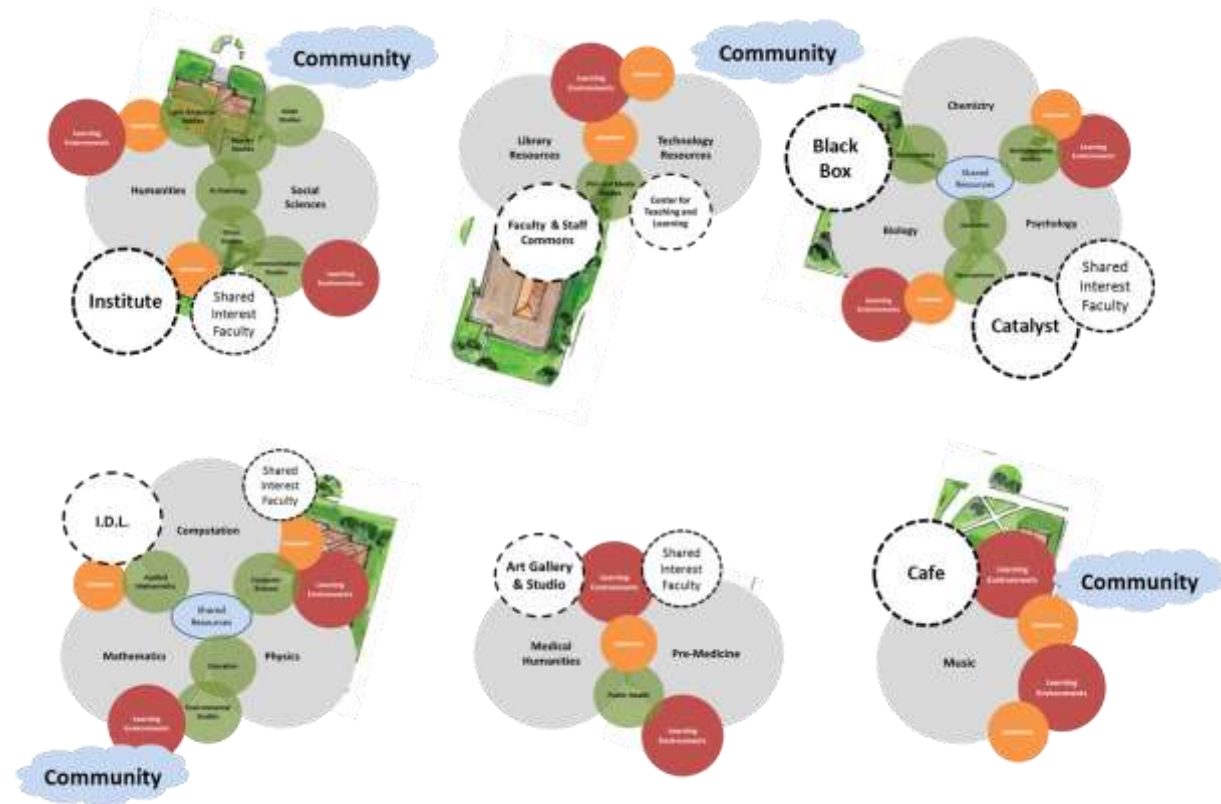
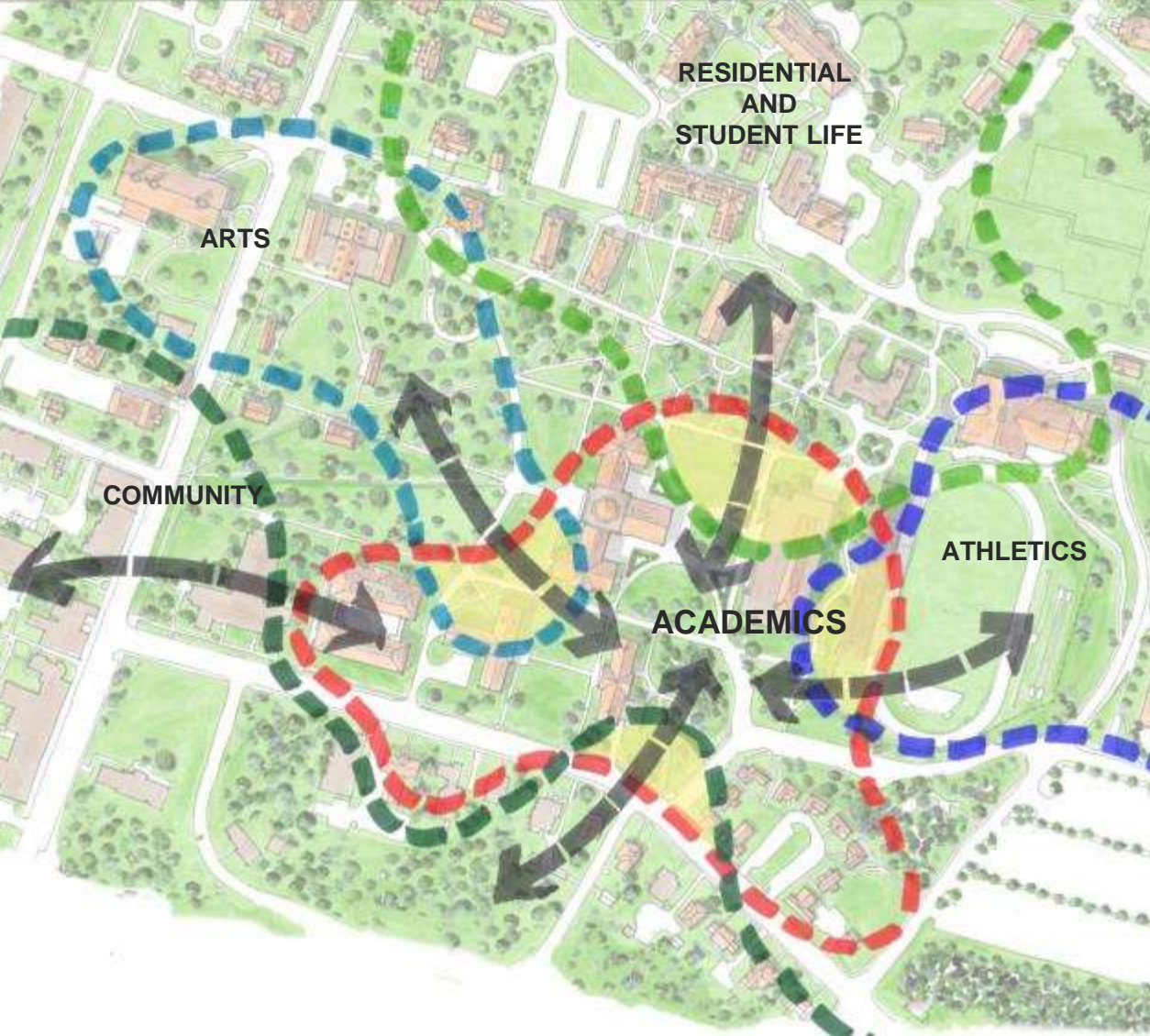
Informal interaction space



Collaboration Space



Learning beyond the Classroom



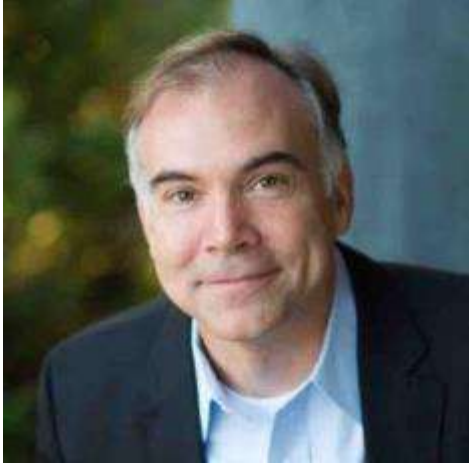
What's Next: Cross Pollination



An Interdisciplinary kaleidoscope of pieces that need to go together”

Jeanne Narum, October 2016

Questions & Comments



We look forward to your questions and comments.

Please share them with us via the chat feature.

We will respond at the end of the presentation.

Thanks.

Dissolving Boundaries

SHAPING THE SOCIAL AND INTELLECTUAL HEART OF CAMPUS AT
YOUNG HARRIS COLLEGE



VMDO

YOUNG HARRIS COLLEGE

A SMALL COLLEGE WITH A BIG VISION

1. Ambitious Campus Transformation
2. Planning Process
3. Dissolving Boundaries – Program Overlaps / Shared Spaces

CAMPUS TRANSFORMATION

“As a two-year junior college...
YHC was the best black-and-white TV
on the market.”



An Ambitious Campus Transformation



Campus Center + Library



Fitness Center



Apartment Housing



Residence Hall

April 2007

Board of Trustees charged incoming president Cathy Cox to grow the College to four-year status.

December 2008

Accreditation as a baccalaureate-granting institution.

First junior class of the modern era was enrolled Fall of 2009.

A Change of Mission



“Prospective students get that same feeling when they visit campus - an indescribable energy that draws you in.”

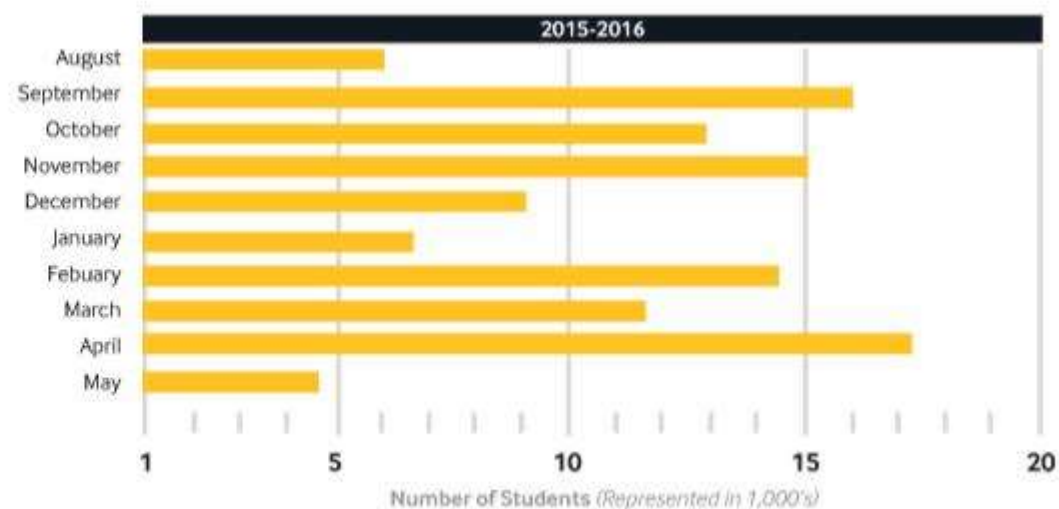
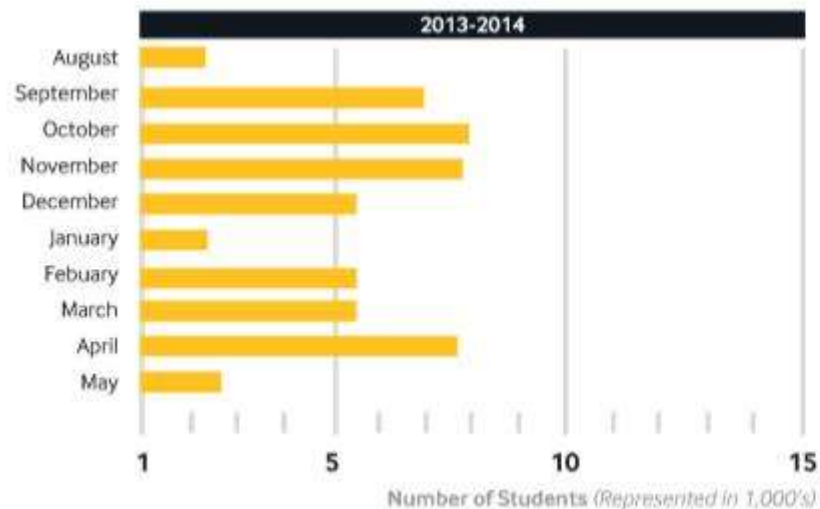
YHC Mission – “Educate, Inspire, and Empower”



A Centerpiece for New Campus Programs



A Centerpiece for New Campus Programs



The library attendance increased from 53,000 to 114,000. That's a percentage of

113%

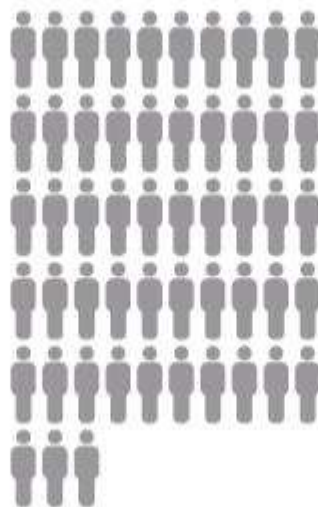
from 2013-2014 to 2015-2016

Library Attendance

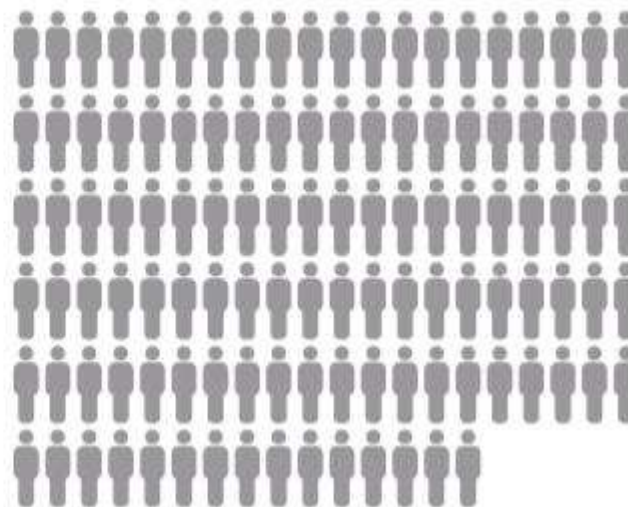


= 1,000 Students

2013-2014



2015-2016



Growth in Enrollment / Expanded Use of the Library



Former Library Spaces

PLANNING PROCESS

DRIVING QUESTIONS

1. What are the benefits of blending (or co-locating) library and campus center programs?
2. Can a mixed-use building save space by capitalizing on those benefits and synergies?
3. Do these program overlaps increase student engagement and intensify the building's use?
4. Can learning spaces be shared effectively between departments and programs?
5. What is the right balance of food and social space to animate learning spaces?

Faculty / Student Sessions

Front porch entrance: What do you see when you enter?
Mix of interaction, studying and food: Café feel?

Campus Center, not a Student Center:
How best to pull students and faculty together?



Planning Process - Workshops

Faculty / Student Sessions

Front porch entrance: What do you see when you enter?

Mix of interaction, studying and food: Café feel?

Campus Center, not a Student Center:

How best to pull students and faculty together?

Library boundary in flux: Help Desk location 1st vs. 2nd floor?

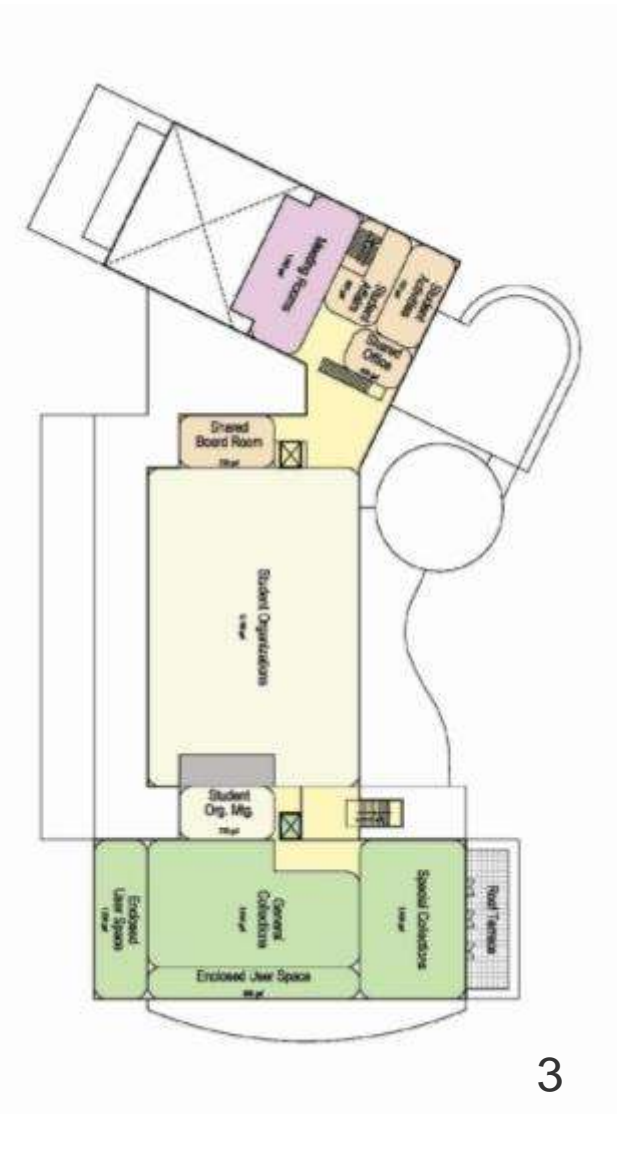
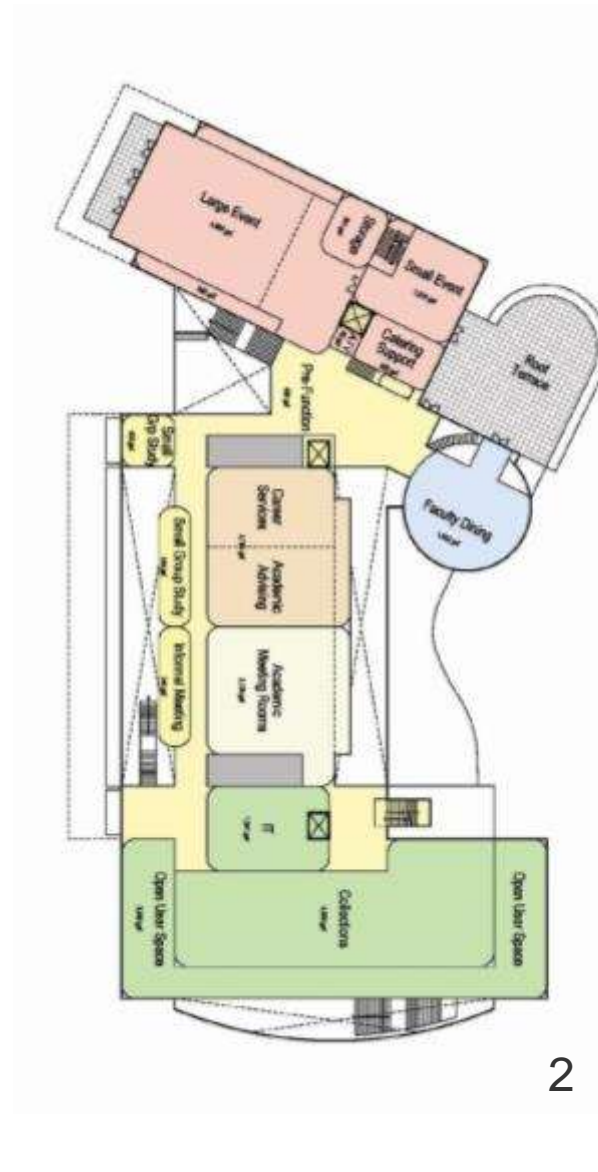
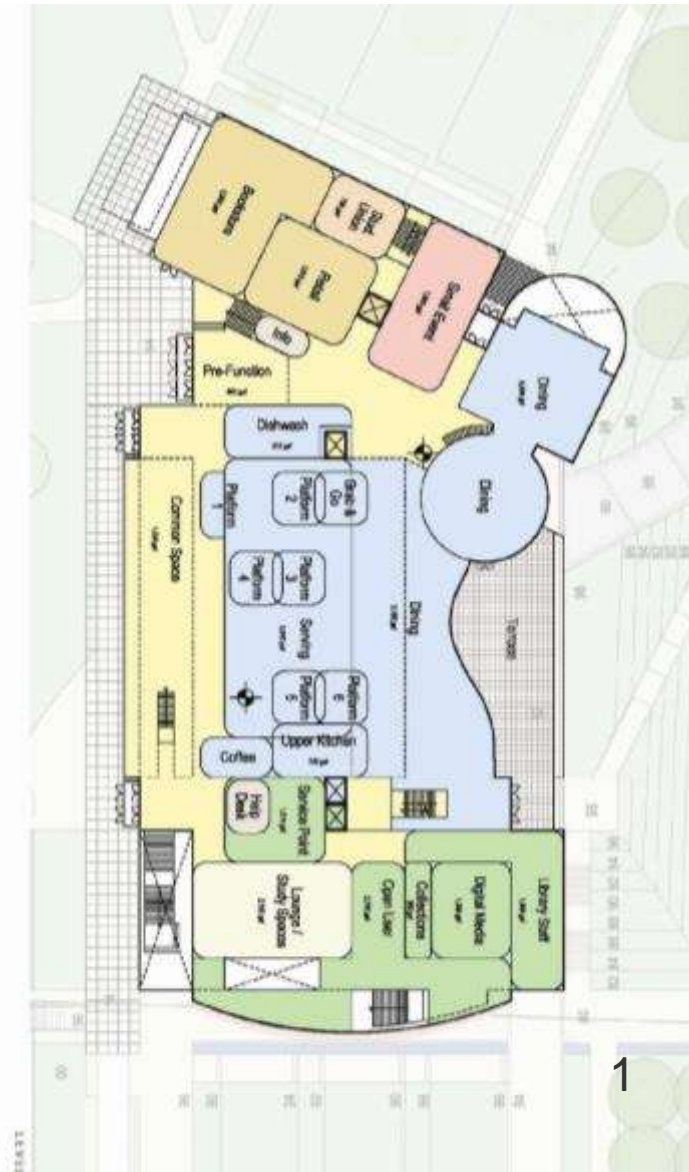
24hr study space and complementary tutoring outside boundary?

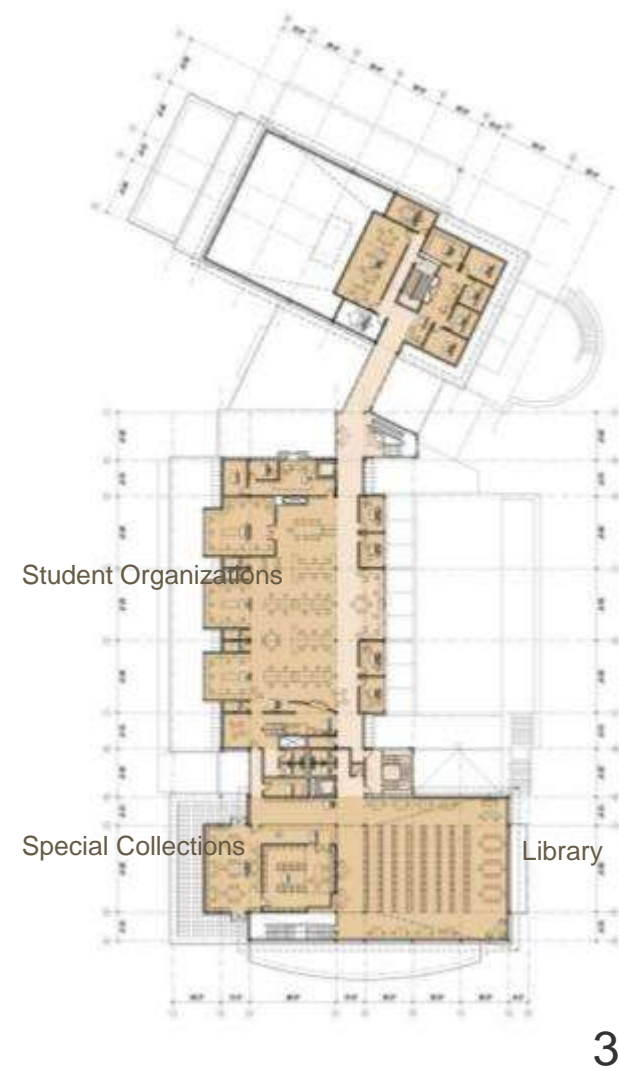
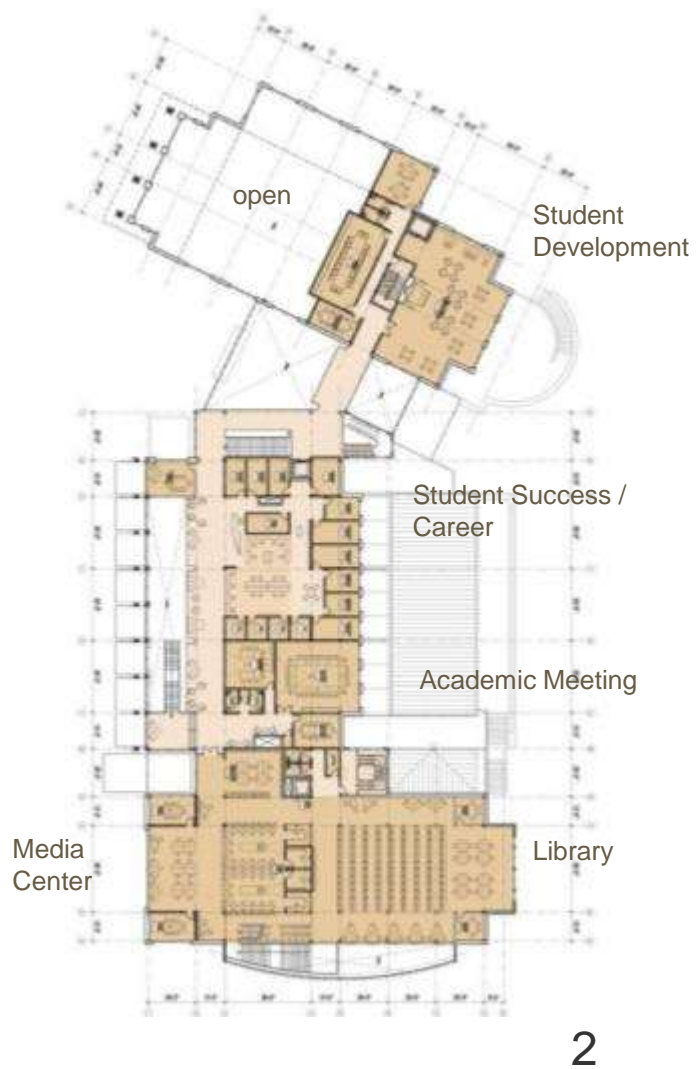
Questions about Teaching, Academic Support, Education spaces:

Integration and adjacencies with Library?



Planning Process - Workshops







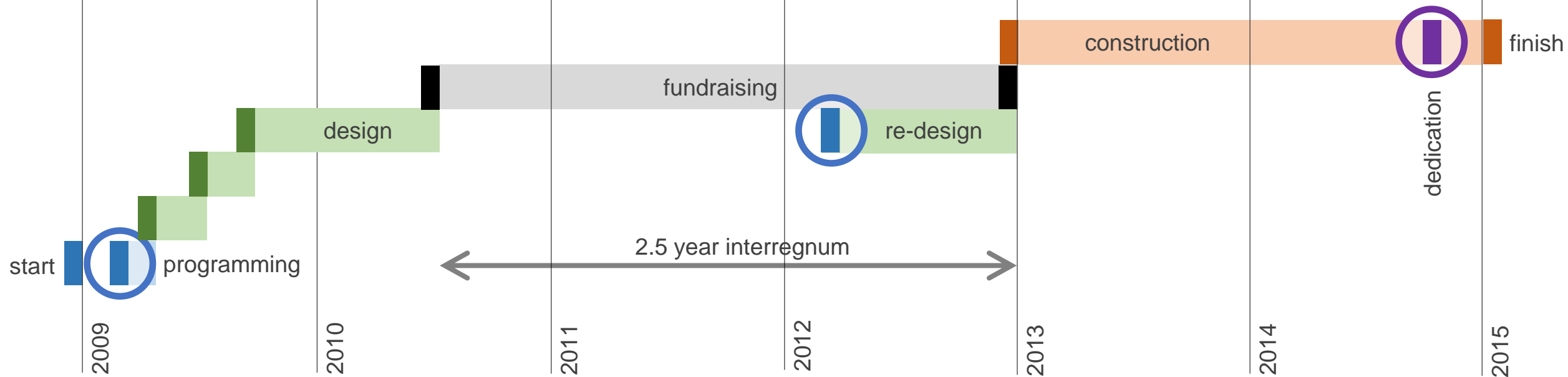
Planning Process – Hands On Design



Planning Process – Hands On Design

What did the team do between completing the design and the start of construction 2.5 years later?
Reexamined Library program components:

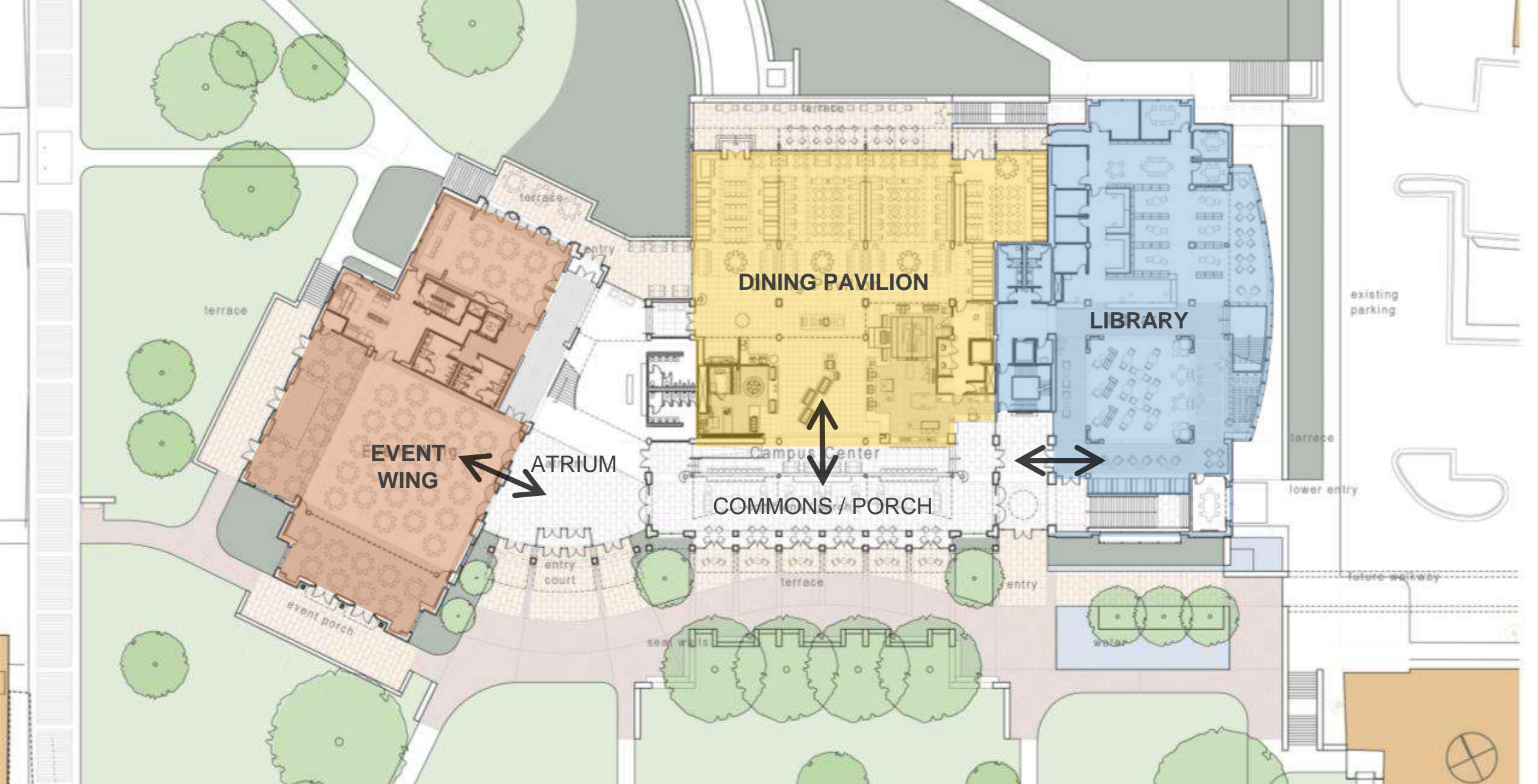
1. Adjusted to new enrollment and growth in the student body
2. Realized that not EVERYTHING needed to be in the new building
3. IT/Help and dedicated Media Space found space in other buildings in the interim
4. Admissions moved in shifting Academic Success to lower level (enrollment top priority)



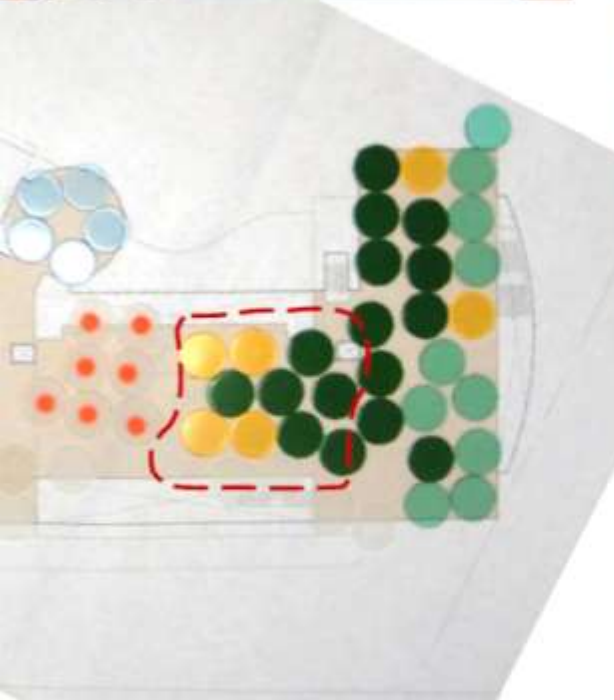
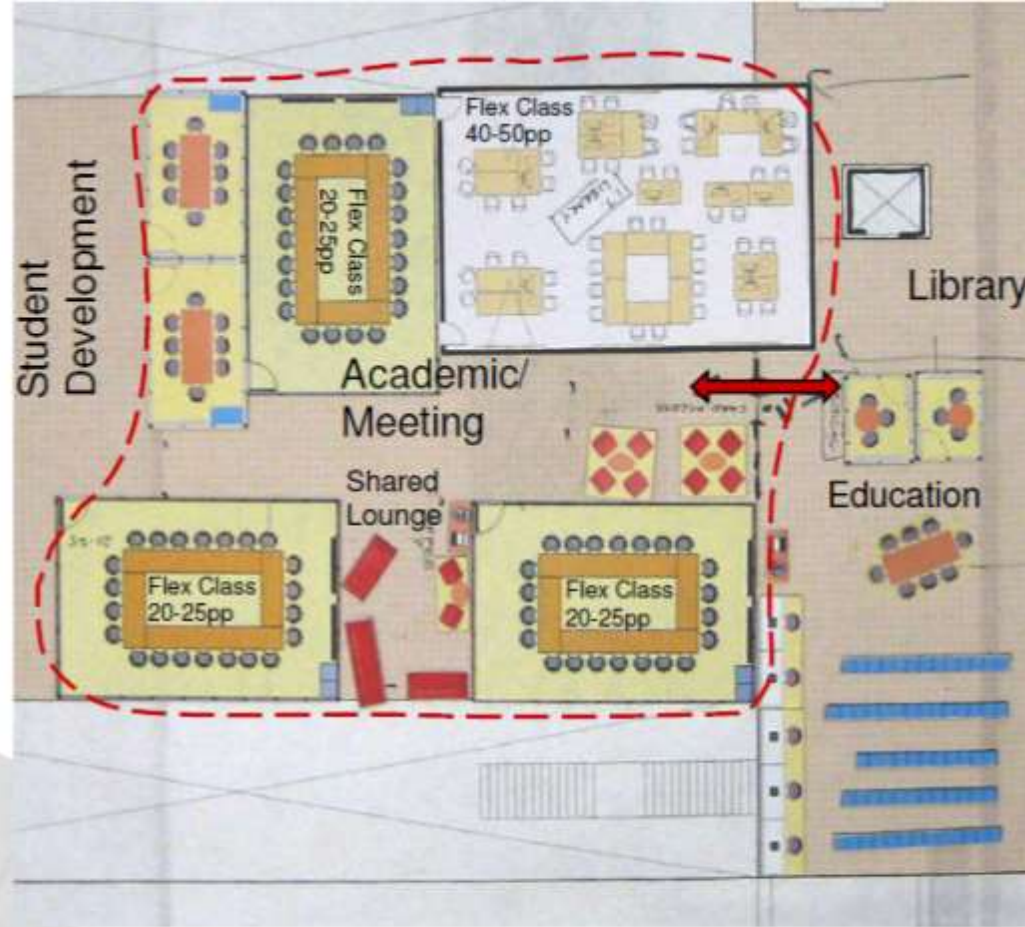
Project Timeline – 2.5 Year Interregnum

DISSOLVING BOUNDARIES

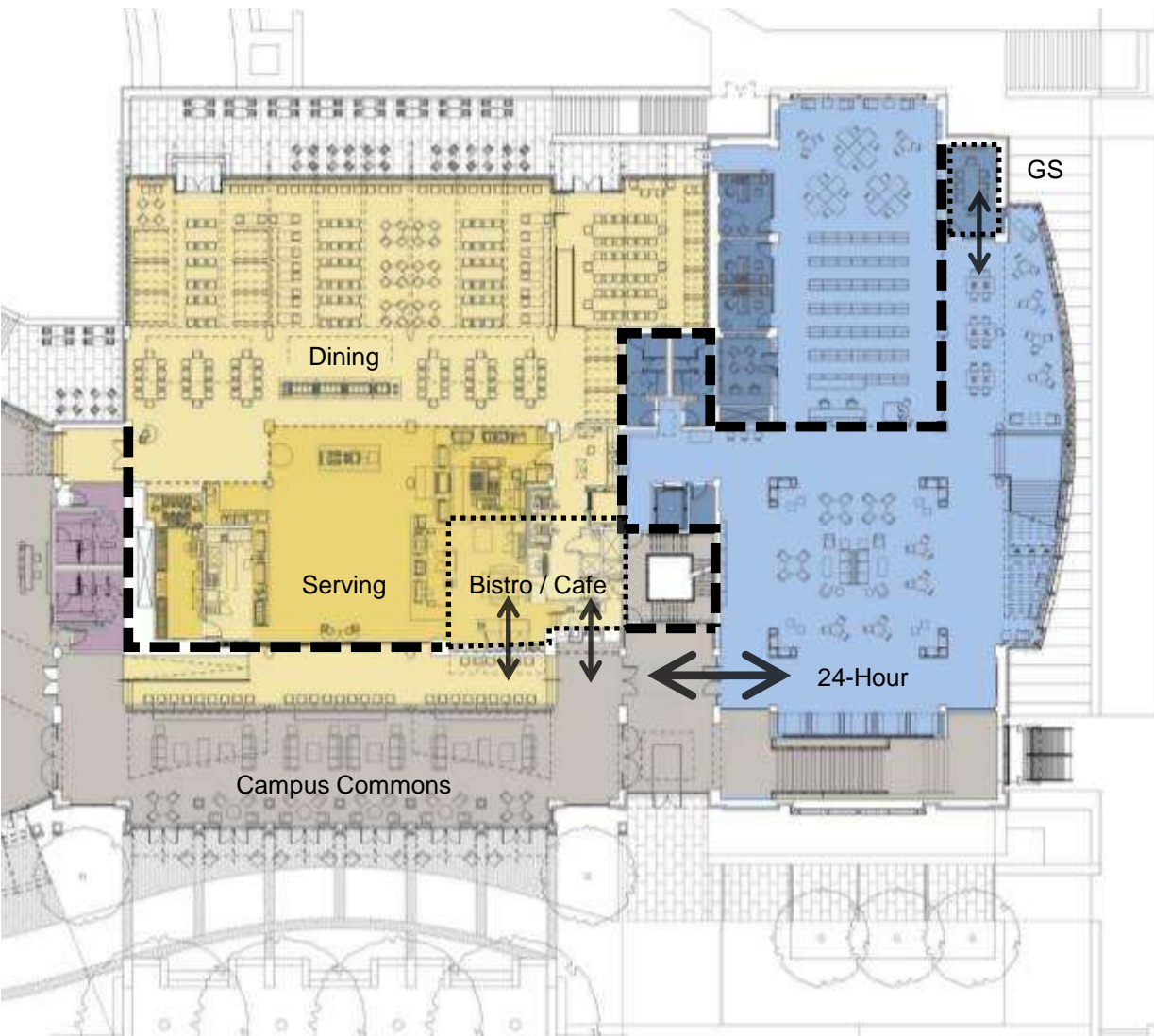
PROGRAM OVERLAPS / SHARED SPACES



Rich Mix of Uses – Union, Dining, and Library

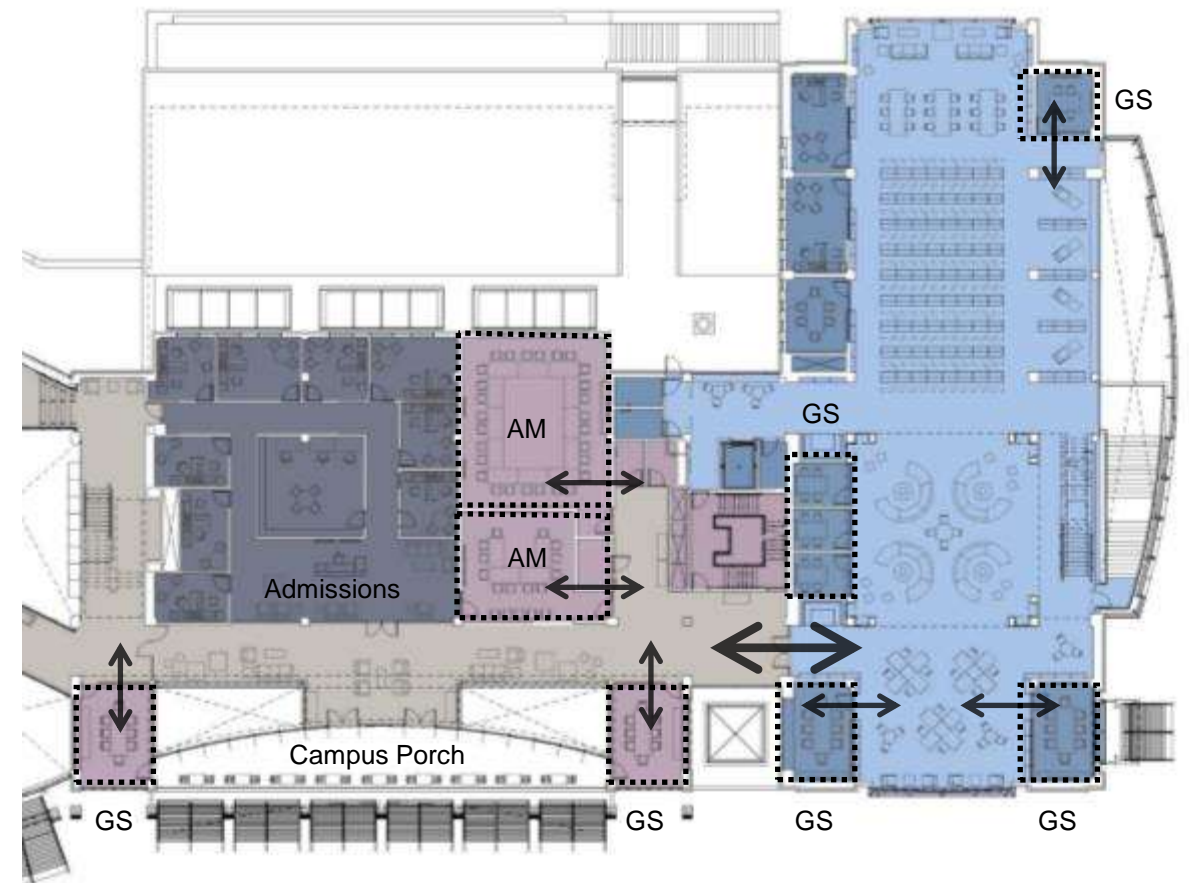


Planning Process – 24-Hour Study and Academic Meeting Space



LEVEL - 1

Campus Commons, Dining, and Library
Dining (yellow), Library (blue)



LEVEL - 2

Shared Academic Meeting and Library
Academic Meeting – AM (purple), Group Study – GS (blue)

Program Overlaps / Shared Spaces



Campus Commons



Level 1 - Library 24-Hour Study



Level 1 - Library 24-Hour Study



Level 1 - Library 24-Hour Study



Level 2 - Campus Commons and Porch



Level 2 - Shared Academic Meeting Space



Level 2 - Shared Group Study Rooms



Level 3 - Layered from Lively to Quiet



Level 3 – Views to Mountains



performances **community open house** **senior capstone** **coffee**
receptions **student group meetings** **chess games** **classes**
administrative meetings **workshops** **information sessions** **storytelling festival**
parents weekend **faculty gatherings** **beekeepers conference**
'morning paws' **conversation** **admissions tours** **announcements**

Social and Intellectual Heart of Campus

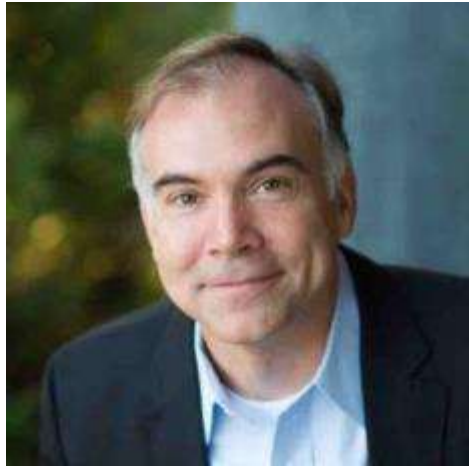
Dissolving Boundaries

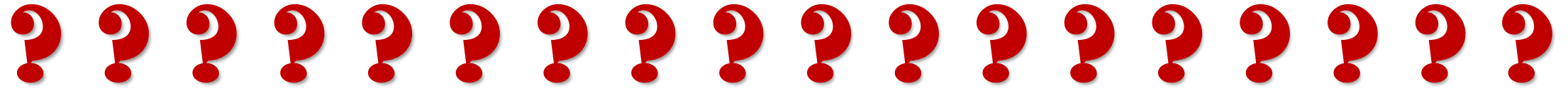
SHAPING THE SOCIAL AND INTELLECTUAL HEART OF CAMPUS AT
YOUNG HARRIS COLLEGE



VMDO

Questions & Comments





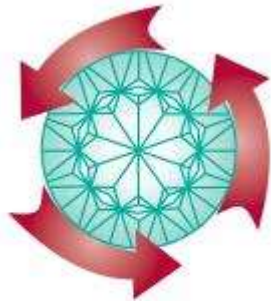
Augsburg College ♦ Calvert Wright Architecture PC ♦ Calvin College ♦ Campbell University ♦ Chapman University ♦ Coalition for Networked Information ♦ Cornell University ♦ Dugdale Strategies ♦ Flad Architects ♦ Harvard University ♦ HOK ♦ ICON Architecture, Inc. ♦ Johns Hopkins University ♦ Lawrence University ♦ Lord Aeck Sargent ♦ Loyola University Maryland ♦ MIT Libraries ♦ Muhlenberg College ♦ Nebraska Wesleyan University ♦ Ohio Northern University ♦ Providence College ♦ Schwartz Silver ♦ SERA Architects ♦ SRG Partnership ♦ The Ohio State University ♦ The Pennsylvania State University ♦ University of Alabama at Birmingham Libraries ♦ University of Arizona Libraries ♦ University of California, Berkeley ♦ University of California, Merced ♦ University of California, Riverside ♦ University of Minnesota ♦ University of North Carolina at Chapel Hill ♦ University of North Carolina at Charlotte ♦ University of Richmond ♦ University of Texas Libraries ♦ University of Washington, Seattle ♦ VMDO ♦ Washington and Lee University ♦ Wilson Architects ♦

Transformative Renovations and New Connections
December 1, 2016

Learning Spaces Collaboratory

Join the conversation – send us
your ideas about questions to ask
in shaping learning spaces

pkallsc@pkallsc.org



<http://www.pkallsc.org/>

Upcoming Spring 2017 LSC Webinars

*21st Century Questions for and from 21st Century
Clients*

February 2017

*Renovations and Repurposing: The Yardstick of
Planning*

April 2017

Report from the Spring LSC Roundtables

June 2017